



Who
Data.org

REMAKING AMERICA FOR THE 21ST CENTURY:
RECLAIMING VACANT PROPERTIES

MIXED MEDIA: BLENDING HIGH-TECH, LOW-
TECH AND GRASSROOTS TECHNIQUES FOR
EQUITABLE COMMUNITY ENGAGEMENT

***MAPPING FROM THE GROUND UP:
HOFFMAN TRIANGLE AND THE LOWER 9TH WARD***



THE UNIVERSITY *of*
NEW ORLEANS

Michelle M.
Thompson, PhD

Brittany N.
Arceneaux

New Orleans, LA

21 June 2012

AGENDA

- * What is PPGIS?
- * What is WhoData.org?
- * Who is WhoData?
- * Survey Projects

Hoffman Triangle

Lower 9th Ward

Lakeview Streets Study

- * Project Partners
- * WhoData.net

A **public participation geographic information systems** (PPGIS) program will encourage students (& faculty) to work closely with community-based organizations and municipal leaders to **integrate** neighborhood and regional data for **mutual understanding** and **access**.

Bringing the academic **(theory to) practices** of GIS and mapping to the local level in order to promote (spatial) knowledge production and to change geographic involvement and awareness on a local level. (source: wiki)

In a post-Katrina environment, we must understand our needs 'from the ground up.'

WhoData empowers organizations throughout New Orleans by providing them a platform to **map** and **analyze** the information they collect on properties in their area. We provide **training, tools and support** to conduct property surveys of resident-led 'quality of life' issues in their neighborhoods.

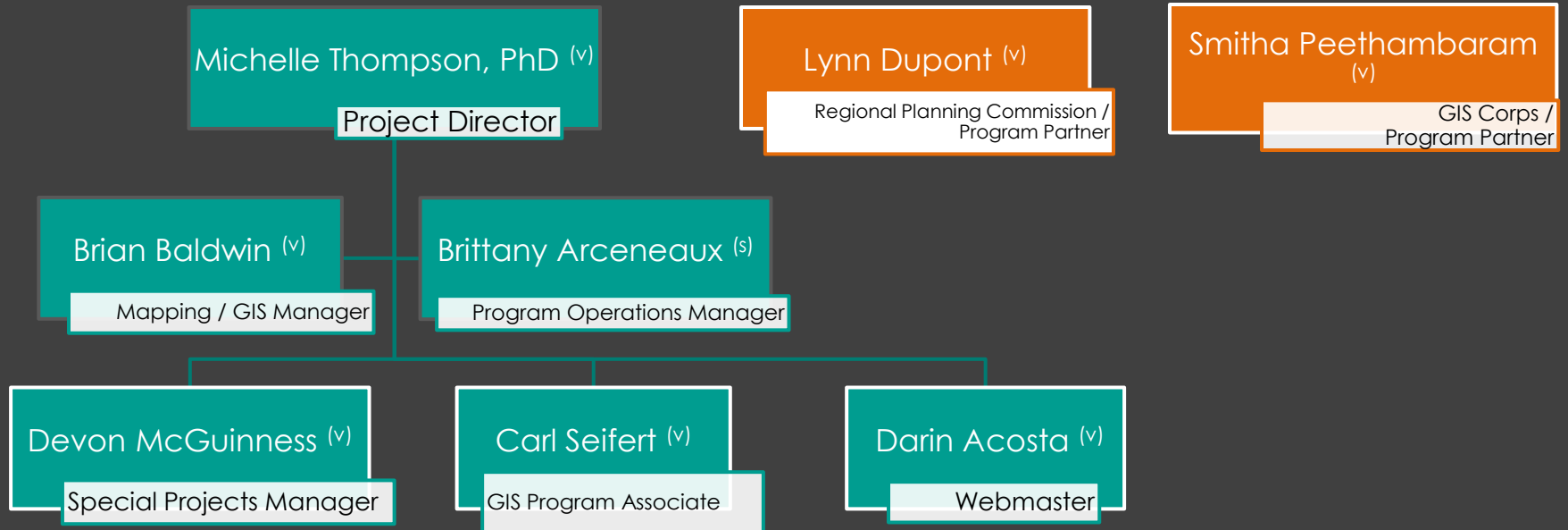
WhoData.org is an online mapping tool allows residents to assess their own neighborhoods, highlight properties that show indicators of blight, create their own maps and property lists, and share this information with the public.



WhoData Organizational_Chart

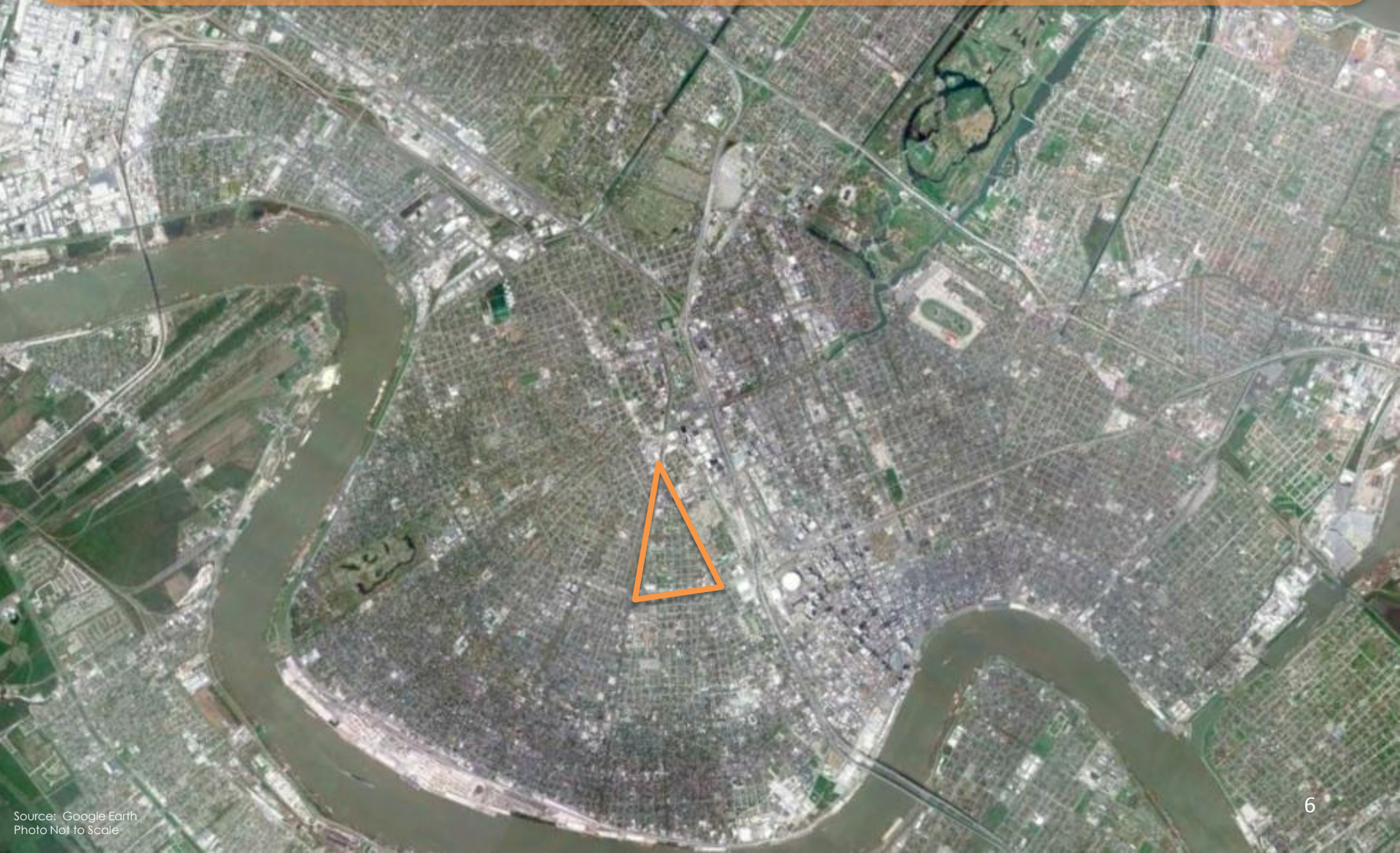
WhoData

Program Partners

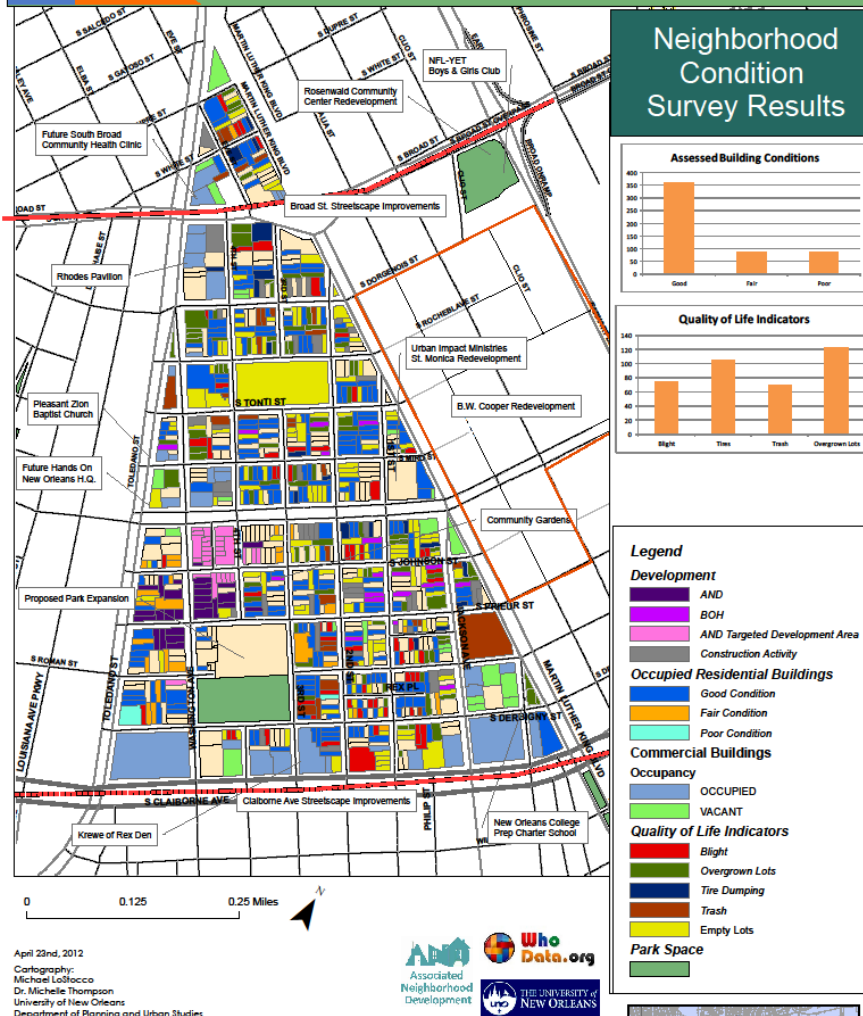


Hoffman Triangle Neighborhood

New Orleans, LA



Hoffman Triangle: Community Assets & Development Opportunities



April 23rd, 2012

Cartography:
Michael LaBacca
Dr. Michelle Thompson
University of New Orleans
Department of Planning and Urban Studies

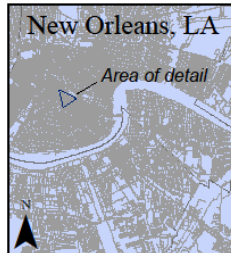
Data Sources:
City of New Orleans: <data.nola.gov> 2011 GIS data: NOLA_Parcels_20111118.shp, NOLA_Streets_20111118.shp, NOLA_Parks_20110818.shp;
UNO PLUS Fall 2011 Hoffman Triangle Parcel Condition Survey data: trash, tires, lights, commercial properties inventory;
blight data: Total Gully Code Enforcement Cases, Code Enforcement Document Library, The City of New Orleans, 25 July 2011, nola.gov/RESIDENT/CodeEnforcement/CodeEnforcementDocumentLibrary/;
economic data: Orleans Parish Assessor's Office, Associated Neighborhood Development Property Files;
demographic data: U.S. Census Bureau, Decennial Census 2010

Disclaimer: The data herein, including but not limited to geographic data, tabular data, electronic data structure or files, are provided "as is" without warranty of any kind, either expressed or implied, or statutory, including, but not limited to, the implied warranties of merchantability and fitness for a particular purpose. The entire risk as to the quality and performance of the data is assumed by the user. No guarantee of accuracy is granted, nor is any responsibility for reliance thereon assumed. In no event shall any third party be liable for direct, indirect, incidental, consequential or special damages of any kind, including, but not limited to, loss of anticipated profits or benefits arising out of use of or reliance on the data. The third parties will not accept liability for any damages or misrepresentation caused by inaccuracies in the data or as a result of changes to the data caused by system transfers or other transformations or conversions, nor is there responsibility assumed to maintain the data in any manner or form. These data have been developed from the best available sources. Although efforts have been made to ensure that the data are accurate and reliable, errors and omissions originating from physical sources used to develop the data may be reflected in the data supplied. Users must be aware of these conditions and bear responsibility for the appropriate use of the information with respect to possible errors, scale, resolution, classification, positional accuracy, development methodology, time period, environmental and climatic conditions and other circumstances specific to these data. The user is responsible for understanding the accuracy limitations of the data provided herein. The burden for determining fitness for use lies entirely with the user. The user should refer to the accompanying metadata noted for a description of the data and data development procedures. Although these data have been processed successfully on computer within the entities, no guarantee, expressed or implied, is made for the third parties regarding the use of these data on any other system, nor does the act of distribution constitute or imply any such warranty. Distribution of these data is intended for information purposes and should not be considered authoritative for navigation, engineering, legal and other site-specific uses.

Hoffman Triangle

Community Assets & Development Opportunities

Spring 2012



Lower 9th Ward Neighborhood

New Orleans, LA



LOWER 9TH WARD CONDITION SURVEY 2011/2012

Lower 9th Ward

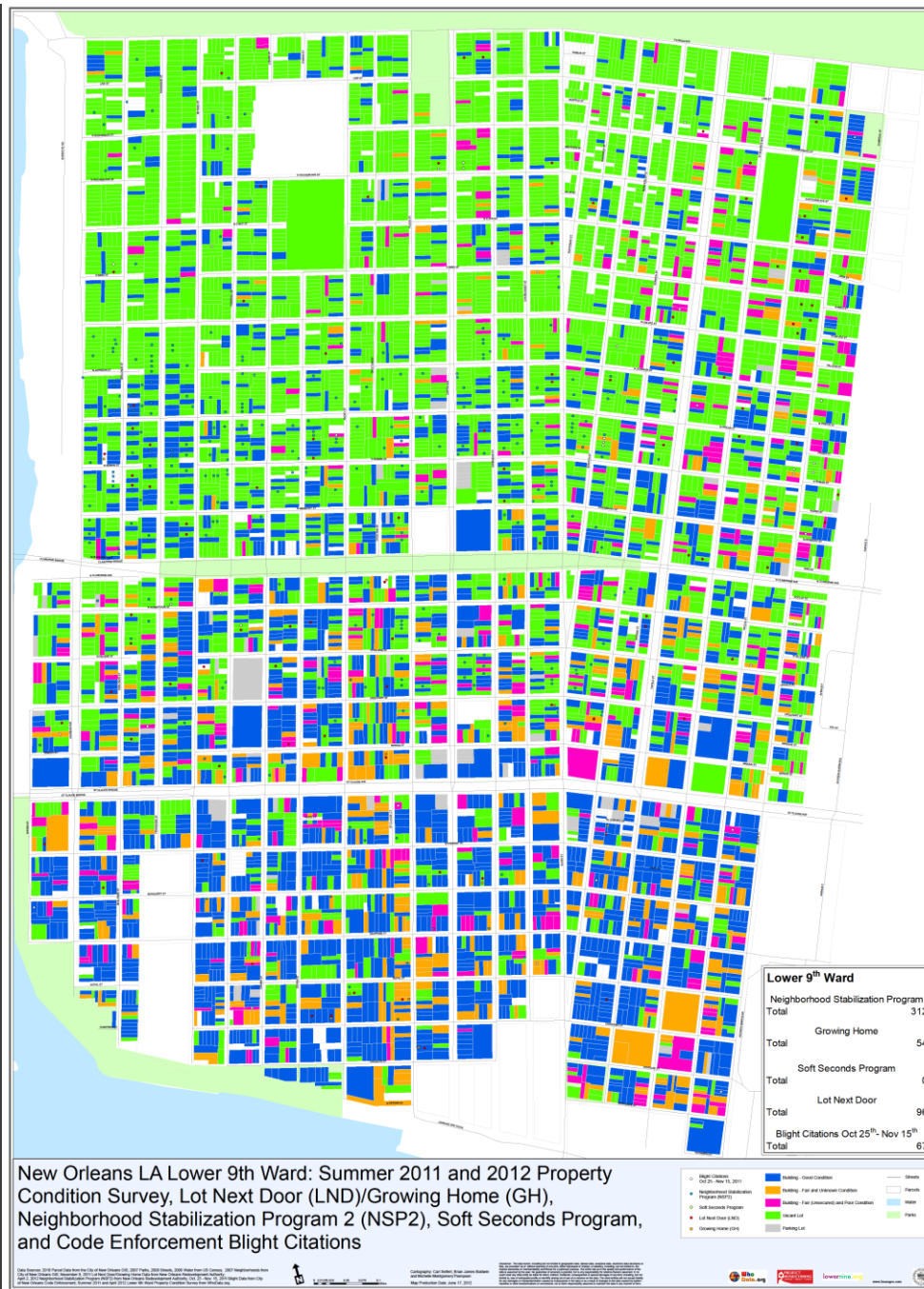
HUD Neighborhood Stabilization Program 2	
Total	312

NORA Growing Home	
Total	54

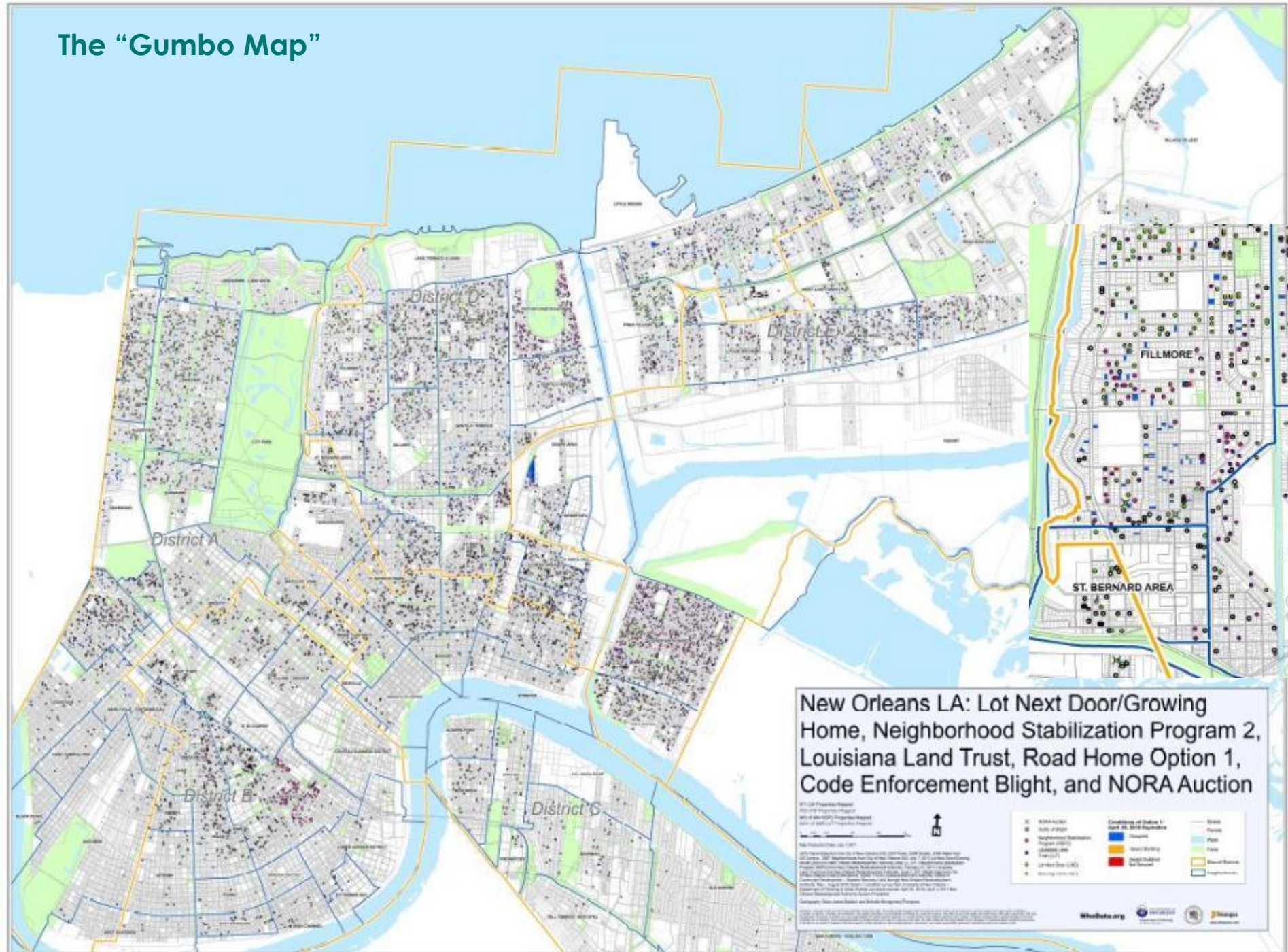
City Soft Seconds Mortgage Program	
Total	0

NORA Lot Next Door	
Total	96

City Blight Citations 2011	
Total	625

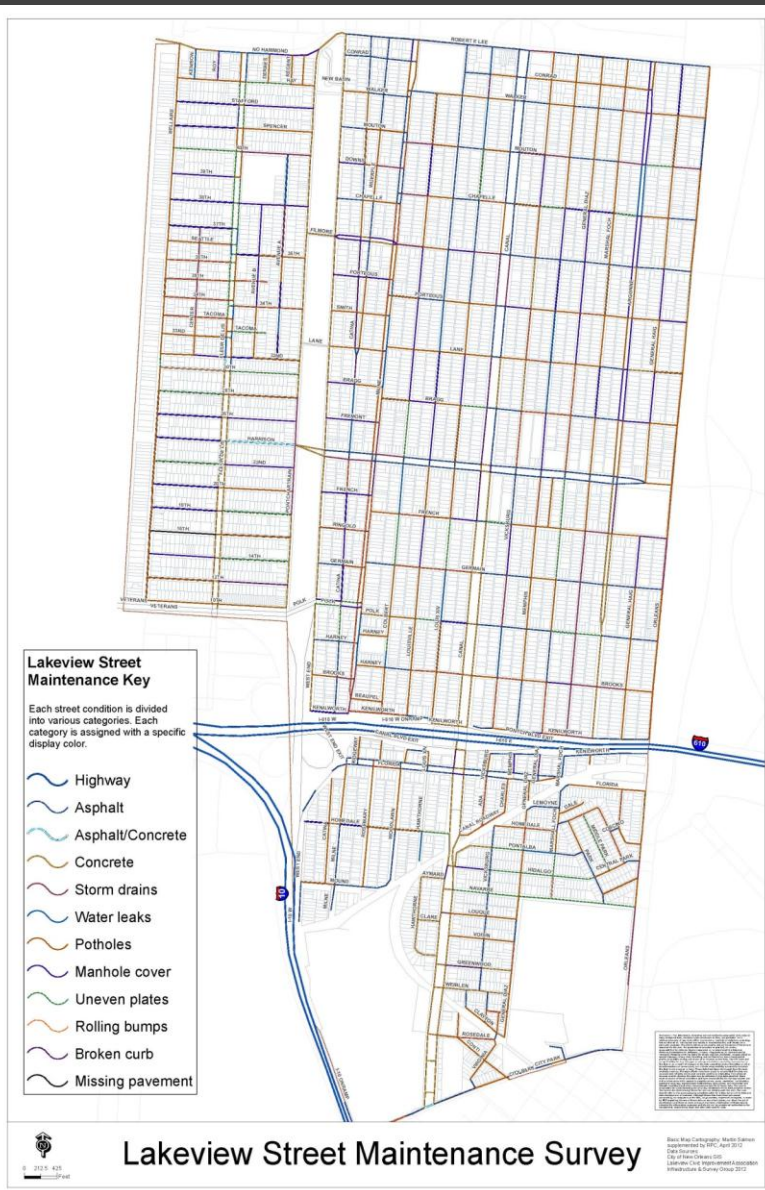


The “Gumbo Map”



Lakeview Street Maintenance Study

Spring 2012



Lakeview Street Survey Survey Field Reference Sheet

Road Type:



Asphalt



Concrete

Manhole Cover:



Slightly Raised:
Raised 1" to 4"



Severely Raised:
Raised more than 4"



Raised and Severely Raised:
More than one type of manhole problem

Pothole:



Small Potholes:
Smaller than an average dinner plate



Large Potholes:
Larger than an average dinner plate



Small & Large Potholes:
More than one type of pothole problem

Storm Drains:



Clogged:
Debris covering three-quarters or more of grate



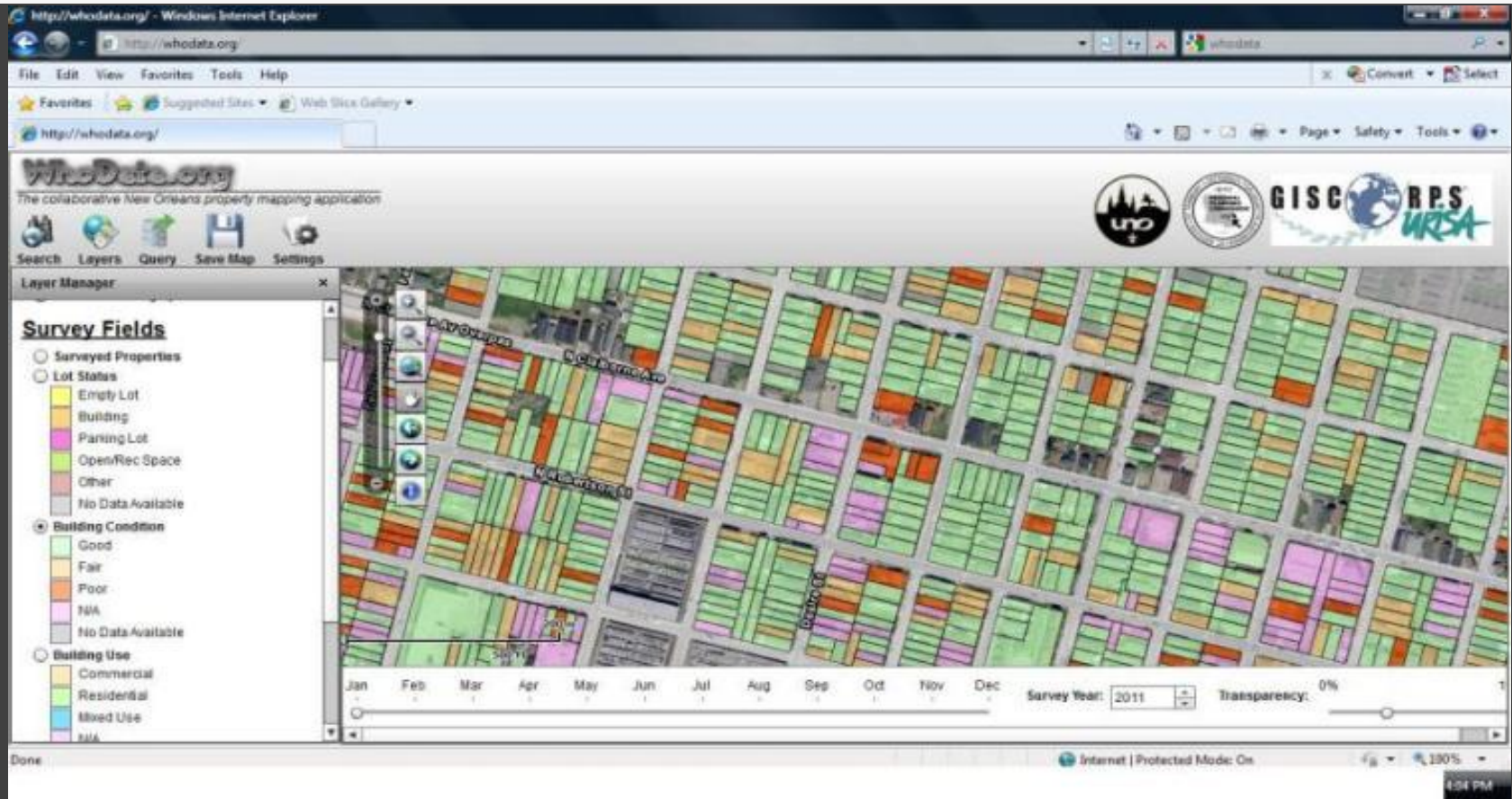
Broken:
Large visible cracks or is sunken



Clogged & Broken:
Street segment containing both types of problems

WHODATA.ORG

COMMUNITY DATA INFORMATION SYSTEMS



<http://www.whodata.org>

www.whodata.net



Project Partners

Hoffman Triangle

Lower 9th Ward

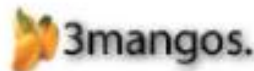


REGIONAL PLANNING COMMISSION
LYNN DUPONT
WWW.NORPC.ORG
TEL. 504. 483. 8500

PROJECT HOMECOMING
SARAH GREEN
[HTTP://PROJECTHOMECOMING.NET](http://PROJECTHOMECOMING.NET)



lowernine.org



www.3mangos.com

LOWERNINE.ORG
LAURA PAUL
WWW.LOWERNINE.ORG

3MANGOS
BRIAN BALDWIN
WWW.3MANGOS.COM

THANK YOU

Questions?